



# SYNCHRO™ Perform

## Field-based Construction Delivery Solutions

### DAILY COST AND PRODUCTION

SYNCHRO Perform captures real-time cost and production rates within an integrated system unique in the construction sector. It overcomes the weaknesses of manual performance trackers and end-of-month reporting delays, providing managers with the early feedback needed to make course corrections and improvements.

- ◆ Capture costs and progress in the field to monitor and report on daily costs and production rates against targets in real time.
- ◆ Breakdown performance into disciplines and locations for analysis and monitoring.

### EARNED VALUE AND PERFORMANCE MANAGEMENT

SYNCHRO Perform provides a standardized, disciplined approach to earned value and performance management. By giving teams a central system to collect project data, project team members are able to avoid the risks of having siloed and inconsistent analysis.

- ◆ Bring the project plan to life with S-curve charts that provide rapid insight and help identify areas of poor performance.
- ◆ Use progress methods, such as rules of credit, quantity-based progress, and the percentage of completion.

### PROGRAM/SCHEDULE COLLABORATION

SYNCHRO Perform is the only construction platform that integrates programs, sharing them with entire project teams and thereby dramatically increasing information sources and the opportunities to collaborate and re-prioritize planned work. Automatically connect construction programs to actual field delivery, enabling you to:

- ◆ Integrate program activities and financial cost codes into a single system.
- ◆ Provide field statuses on expected start-and-finish dates to inform program changes.

### PROGRESS CLAIM VERIFICATION

SYNCHRO Perform enables lump sum and schedule-of-rates projects to easily verify subcontractor progress claims. Actual physical progress is efficiently captured through web and mobile workflows, giving certainty and transparency to both parties. Discrepancies are quickly highlighted, improving cost and time management, while also:

- ◆ Strengthening subcontractor management with centralized data capture and reporting.
- ◆ Linking field-based progress capture to claims saving administration time and effort.

### PROGRESS MEASUREMENT

SYNCHRO Perform enables the daily tracking of physical progress linked directly to program activities. Through dashboards and reports, leaders have clear visibility to support efficient and effective decision-making, while:

- ◆ Monitoring physical progress against project milestones.
- ◆ Rapidly investigating issues or under-performing activities.
- ◆ Improving the efficiency of resource management and stakeholder confidence in progress reports.

### PLANT AND EQUIPMENT TRACKING

SYNCHRO Perform allows easy tracking of plant and equipment to minimize idle time and improve the usage and identify savings. Automate inspections and integrate telematic data for improved management.

### ATTENDANCE AND COMPETENCY

SYNCHRO Perform allows supervisors to scan their workforce from the field using smartphone or tablet devices, or integrate with site turnstiles and kiosks. Attendance data provides real-time, reliable, searchable data for accurate team tracking. Additionally, competency data can be integrated and verified in the field improving compliance and safety.

- ◆ Leverage mobile and tablet devices.
- ◆ Improve safety and compliance by verifying competencies via daily checks.
- ◆ Improve accuracy of your data by reconciling with timesheets to identify gaps.

### DAILY DIARIES AND REPORTS

SYNCHRO Perform provides a standardized solution and central source for daily records that are otherwise difficult and time consuming to extract from paper diaries.

- ◆ View consistently presented individual diaries on demand to monitor time and cost performance.
- ◆ Create searchable, whole-of-project records for ongoing learnings, claims, and more.

## SYSTEM REQUIREMENTS

**MINIMUM:** Mobile networks (3G, 4G, WiFi) in the field and high-speed internet access in project offices.

**RECOMMENDED:** Supports iOS, Android, and Windows-based mobile devices.

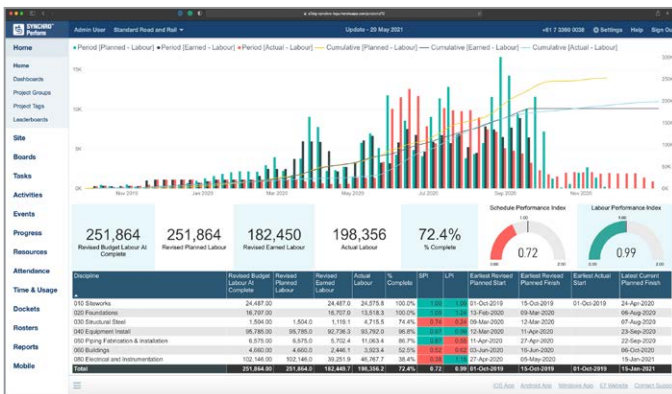
**BROWSER COMPATIBILITY:** Any modern internet browser.

## PHOTO MANAGEMENT

SYNCHRO Perform enables a disciplined approach to project photos.

They immediately link to activities, events, or tasks that create traceability and searchability for the life of a project. The process turns photos into central, rich, and readily usable assets for reports, claims, and other key project documents.

- ◆ Unlock the value of photo assets by adding notes and mark-ups.
- ◆ Generate automatic watermarks with GPS and time data for indisputable records.



Make data-driven decisions based on real-time information.

## EVENTS AND NOTICES

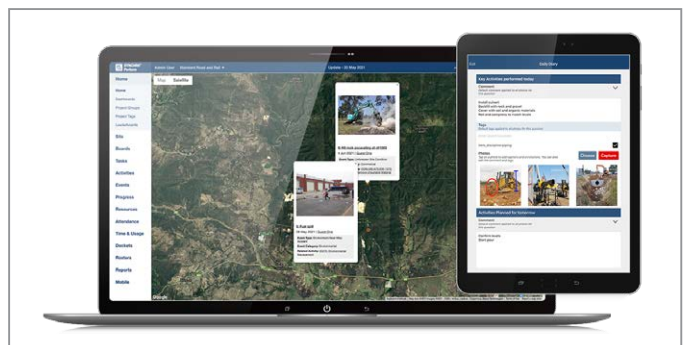
SYNCHRO Perform eliminates the risks inherent in informal event management processes, turning issues into improvements, and fast-tracking

change management. Using our mobile event capture, team members can record events in real time and:

- ◆ Preserve contractual entitlement to make claims by maintaining a robust chain of records to support contractual obligations.
- ◆ Link events to activities to track the time and cost impacts of delays and variations.
- ◆ Diagnose repeat issues to minimize future events and drive continual improvement.

## ANYWHERE, ANYTIME PROJECT ACCESS

SYNCHRO Perform leverages mobile and web-based technology so you can make project information available to all relevant team members, based on defined authority levels, mobilizing the power of your entire workforce. SYNCHRO Perform supports major mobile and web platforms and enables diverse work practices and collaboration, from field teams, to design and construct offices, to clients and subcontractors.



Automatically connect construction programs to actual field delivery.

# SYNCHRO Perform At-A-Glance

## PROJECT PERFORMANCE MANAGEMENT

- ◆ Comprehensive progress and cost management features ensure that you seamlessly drive project performance, optimize field resources, and prioritize scheduled work

## FIELD-BASED PROGRESS CAPTURE

- ◆ Measure quantity or ruled credit-based work directly in the field, enriched with comments and photographs
- ◆ Link physical progress against construction schedule items
- ◆ Compare actual start and finish versions of the construction plan with industry standard measures, SPI, and CPI

## RESOURCE MANAGEMENT

- ◆ Easily capture timesheets, docket, equipment, and material usages
- ◆ Provide engineers with accurate daily costings to optimize resources
- ◆ Track attendance of personnel, equipment inspections, and telematic data with readily available project data

## EARLY WARNING OF UNPLANNED EVENTS

- ◆ Eliminate cost and time overruns
- ◆ Turn issues into improvements by capturing and managing change in the field in real time
- ◆ Quarantine costs and time associated with unplanned changes to substantiate commercial claims and optimize financial outcomes

**Bentley**  
Advancing Infrastructure

FIND OUT MORE AT [BENTLEY.COM](https://www.bentley.com)

1.800.BENTLEY (1.800.236.8539) | Outside the US +1.610.458.5000 | [GLOBAL OFFICE LISTINGS bentley.com/contact](https://www.bentley.com/contact)